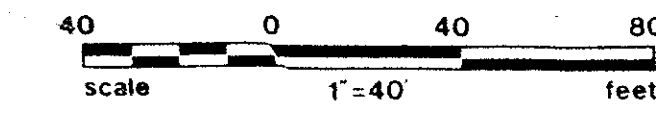


PLAT NO. 7 EASTPOINTE COUNTRY CLUB

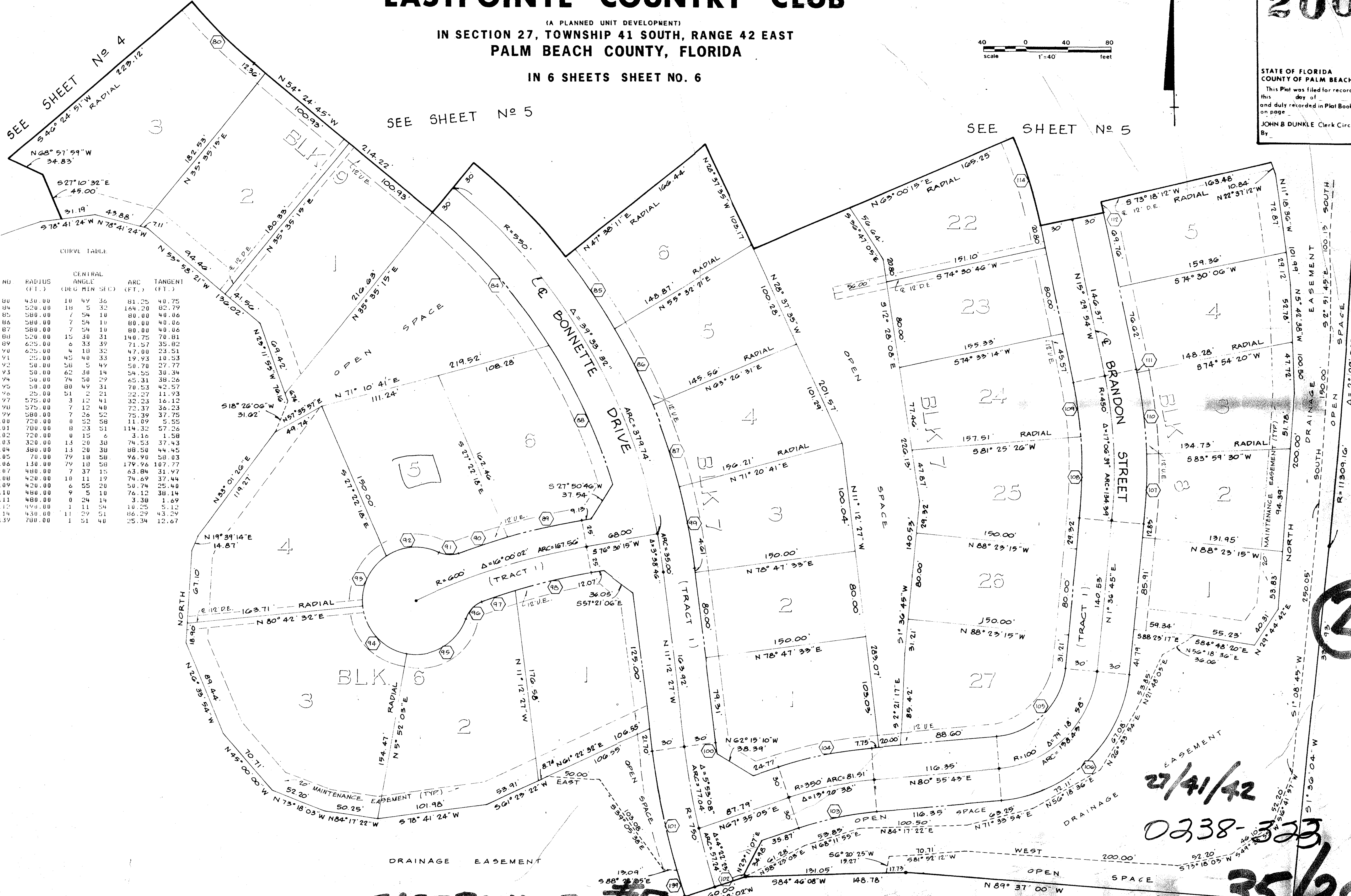
(A PLANNED UNIT DEVELOPMENT)
IN SECTION 27, TOWNSHIP 41 SOUTH, RANGE 42 EAST
PALM BEACH COUNTY, FLORIDA

IN 6 SHEETS SHEET NO. 6

200



STATE OF FLORIDA
COUNTY OF PALM BEACH
This Plat was filed for record
this _____ day of _____, 1978,
and duly recorded in Plat Book No. _____
on page _____
By JOHN B. DUNKLE, Clerk Circuit Court
DC



CURVE TABLE

NO.	RADIUS (FT.)	CENTRAL ANGLE (DEG MIN SEC)	ARC (FT.)	TANGENT (FT.)
80	430.00	18 49 36	81.25	40.75
81	520.00	18 5 32	144.20	82.79
82	580.00	7 54 10	80.00	40.00
83	580.00	7 54 10	80.00	40.00
84	580.00	7 54 10	80.00	40.00
85	580.00	7 54 10	80.00	40.00
86	580.00	7 54 10	80.00	40.00
87	580.00	7 54 10	80.00	40.00
88	520.00	15 30 31	140.75	70.81
89	625.00	6 33 39	71.57	35.82
90	625.00	6 33 39	71.57	35.82
91	25.00	45 40 33	19.93	10.53
92	50.00	58 5 49	50.70	27.77
93	50.00	62 30 14	54.55	30.34
94	50.00	74 50 29	65.31	38.26
95	50.00	80 49 31	70.53	42.57
96	25.00	51 2 21	22.27	11.93
97	575.00	3 12 41	32.23	16.12
98	575.00	7 12 40	73.37	36.23
99	580.00	7 26 52	75.39	37.75
100	720.00	0 52 58	11.09	5.55
101	700.00	8 23 51	114.32	57.26
102	720.00	0 15 6	3.16	1.58
103	320.00	13 20 38	74.53	37.43
104	380.00	13 20 38	88.50	44.45
105	70.00	79 18 58	96.90	58.03
106	130.00	79 18 58	179.96	107.77
107	480.00	7 37 15	63.84	31.97
108	420.00	10 11 19	74.69	37.44
109	420.00	6 55 20	50.74	25.40
110	480.00	9 5 10	76.12	38.14
111	480.00	0 24 14	3.38	1.69
112	480.00	1 11 54	10.25	5.12
114	430.00	11 29 51	86.29	43.29
119	780.00	1 51 40	25.34	12.67

27/41/42
0238-323
35/200

EASTPOINTE - 717